



MONTHLY MEMBERSHIP PROGRESS REPORT

District 13 OH1

Results as of: 05/31/2018

GMT: CINDY GREGG

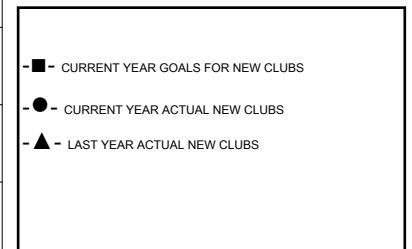
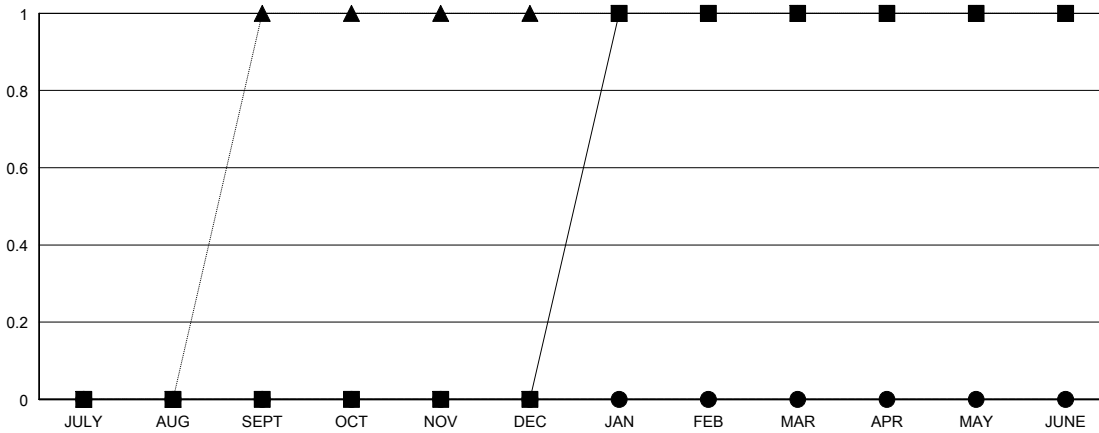
LOCATION OHIO

GMT CA

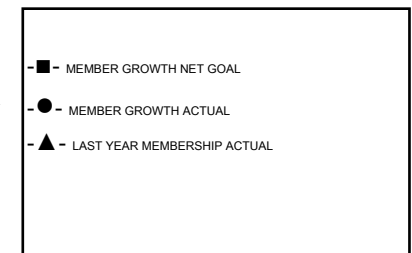
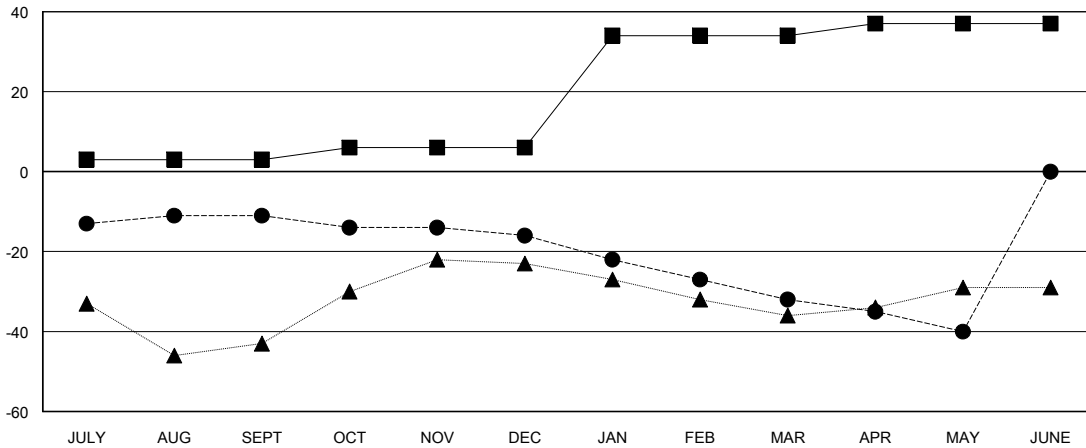
Clubs			
RESULTS FOR 2017-2018			
QUARTER	NEW CLUB GOAL	NEW CLUBS	DROPPED CLUBS
JULY/AUG/SEPT	0	0	0
OCT/NOV/DEC	0	0	0
JAN/FEB/MAR	1	0	0
APR/MAY/JUNE	0	0	0

Members			
RESULTS FOR 2017-2018			
QUARTER	MEMBER GROWTH NET GOAL	MEMBER GROWTH ACTUAL	DROPPED MEMBERS ACTUAL (including transfers)
JULY/AUG/SEPT	3	16	25
OCT/NOV/DEC	3	19	24
JAN/FEB/MAR	28	22	38
APR/MAY/JUNE	3	17	24

GOALS AND ACTUAL NEW CLUBS CUMULATIVE



GOALS AND ACTUAL MEMBERS CUMULATIVE



DROPPED CLUBS: 0	31 CLUBS OF 59 ADDED 1 OR MORE NEW MEMBERS	<u>GENDER DISTRIBUTION</u>	
DROPPED MEMBERS		MALE	1,333 (79.20%)
DECEASED	31	FEMALE	350 (20.80%)
CLUB CANCELLED	0	Women Percentage Fiscal Year Goal: 27%	
OTHER	80	TOTAL FAMILY UNIT MEMBERS	270
TOTAL	111	FAMILY MEMBERS PAYING HALF DUES	138

[CLICK HERE FOR CUMULATIVE MEMBERSHIP DATA](#)